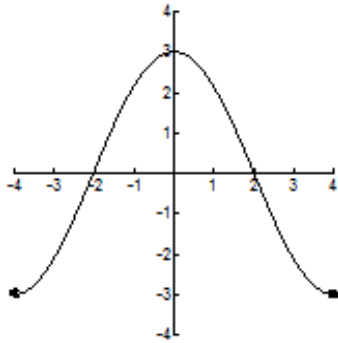


Graphical Analysis

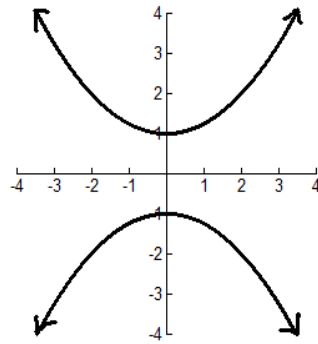
In problems 1-6, determine whether the graph is that of a function. If it is, use the graph to find:

- a) Its domain and range
- b) The intervals on which it is increasing, decreasing, or constant

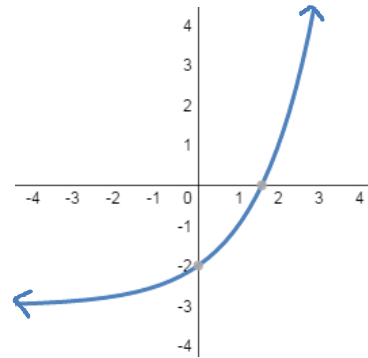
1-



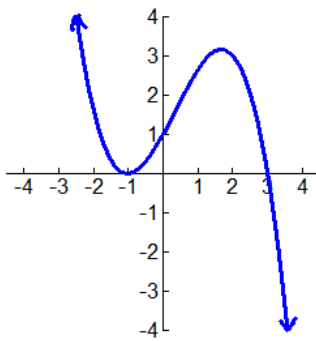
2-



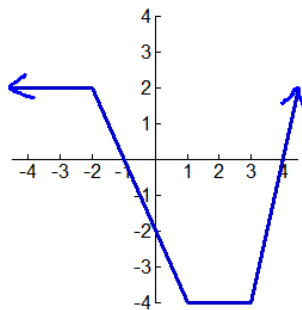
3-



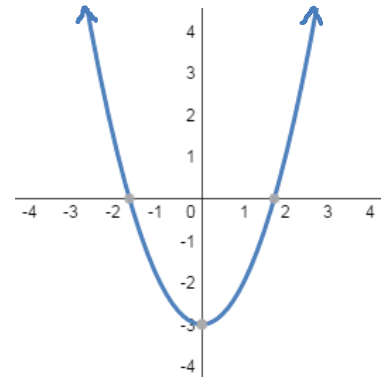
4-



5-



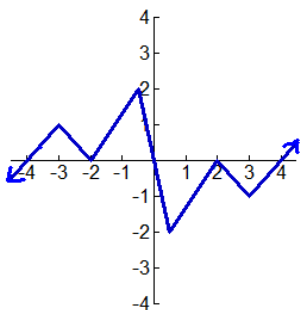
6-



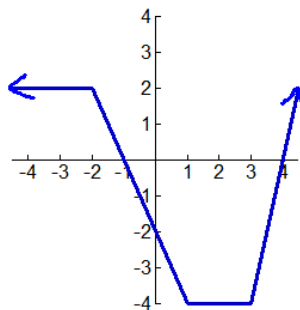
In problems 7-12, determine whether the graph is that of a function. If it is, use the graph to find:

- a) The intercepts (both x & y)
- b) The end behavior
- c) The local maxima & minima

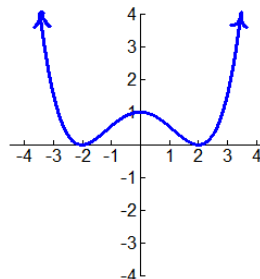
7-



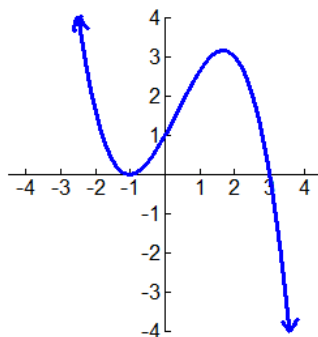
8-



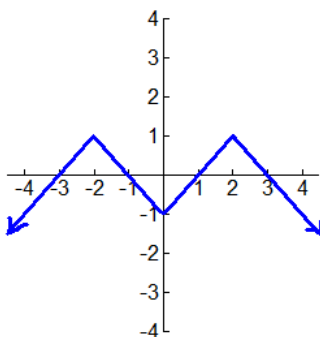
9-



10-



11-



12-

